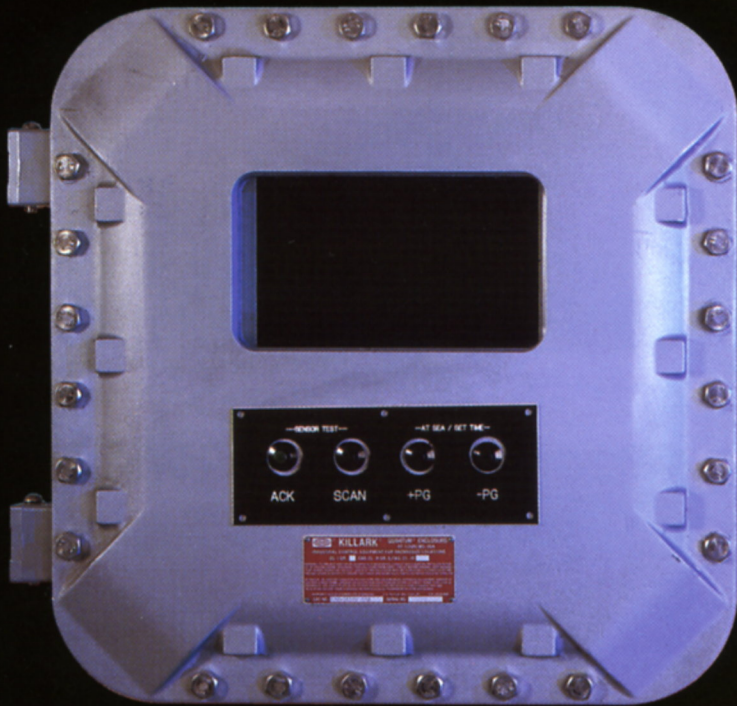


BIG BLUE



USCG AND ABS APPROVED ON DECK CARGO LOADING DISPLAY

The on deck cargo loading display is designed for use by shipboard personnel on board tank ships and barges to view the complete loading operation in one glance.

It is built for the harshest environments of temperature, water, salt, and vibration. It is approved by both ABS and USCG in full compliance for on deck cargo loading operations and is FM approved for Class I, Div. I, Group C & D operation and is explosion proof.

As a full function on deck cargo management display it provides viewing in all lighting conditions and calculates and displays the following information standard:

- Tank ullages in feet, inches, or meters.
- Individual tanks rate of fill or empty in BBLs/Tons/GAL or metric.
- Individual tanks time to full or empty in HR/Minutes.
- Individual tank temperatures.
- Header pressure.
- Individual pump status ON/OFF.
- Two alarm set points for ullage, temperatures and pressures.
- Low power alarm.
- At sea mode. Alarm sounds if cargo in any tank changes by 1%.
- Mil Spec Self-Diagnostics

Options:

- 24VDC UPS Supply
- On deck Remote LCD Displays
- Gauging Sensors with 1/10 to one inch accuracy. Interfaces to existing tank sensors from other manufacturers.

BIG BLUE

USCG AND ABS APPROVED ON DECK CARGO LOADING DISPLAY

ENVIRONMENTAL SPECIFICATIONS

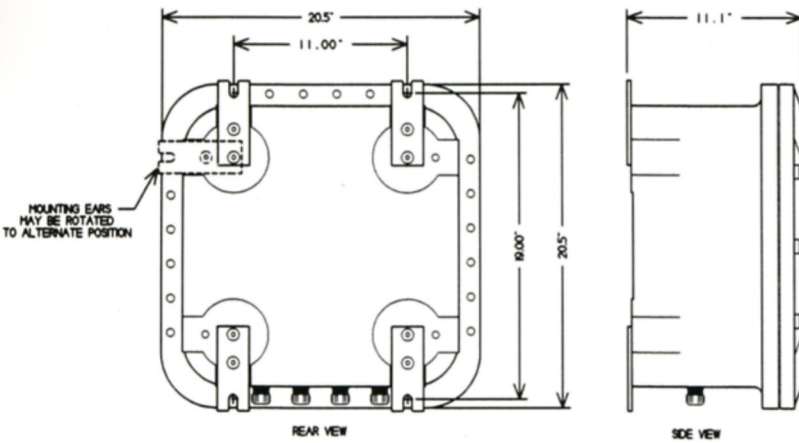
Operating Temperature -30C to +75C
 Non Operating Temperature -55C to +85C
 Altitudes -400 to 5000 meters

PHYSICAL CHARACTERISTICS

Size 20.5"H x 11.1"W x 20.5"L
 Weight 125 lbs.

ELECTRICAL CHARACTERISTICS

Input 12 or 24VDC at 2A



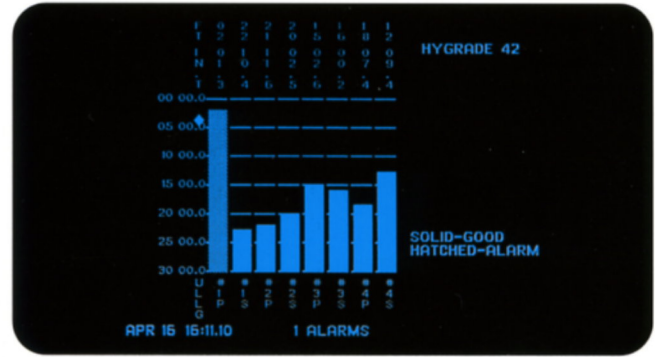
EMS

ELECTRONIC MARINE
SYSTEMS, INC.

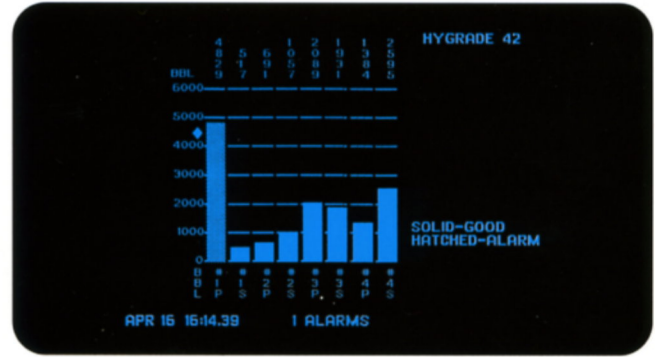
800 Ferndale Place
Rahway, NJ 07065

732-382-4344

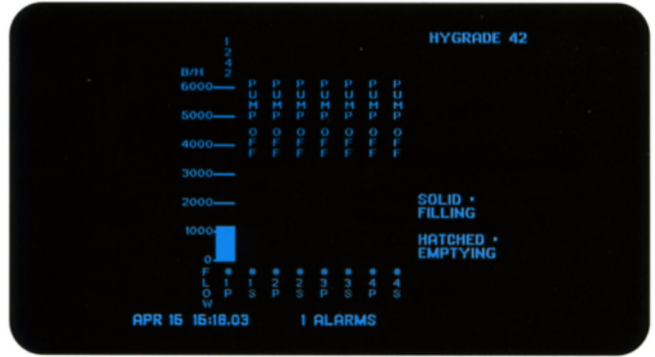
Fax: 732-388-5111



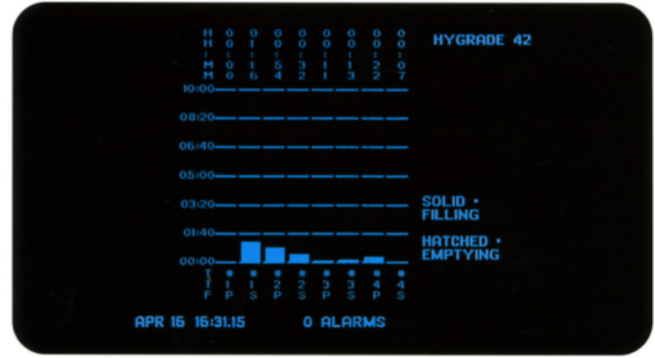
ULLAGE



BARRELS



FLOW



TIME TO FILL

Specs are subject to change without notice.