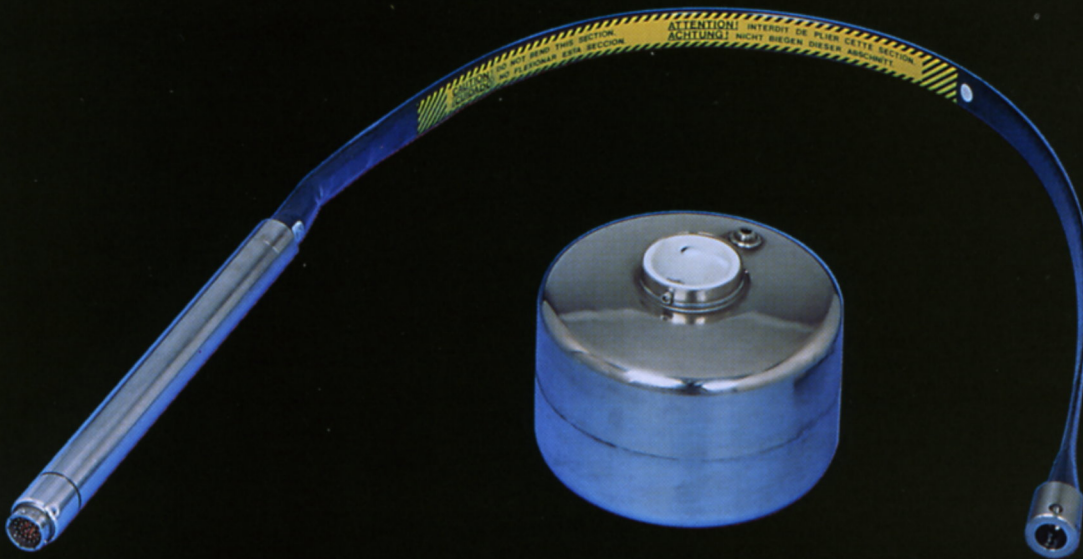


THE GAUGER



USCG, ABS & FM APPROVED CLOSED TANK GAUGING SYSTEM

This closed tank gauging system was designed specifically for military and shipboard application. With over 10,000 presently in service worldwide, it is constructed of all teflon and stainless steel. The simple installation requires no stand pipes or in tank structures. It is intrinsically safe for Class 1, Division 1, Group C and D atmospheres.

This system comes complete with single line LCD and Graphic Display options available for on deck viewing in one glance. If any tank changes ullage 1% while underway, at Sea Mode Alarms are in place for leak detection giving the user a 1/10th inch level accuracy. There are 2 set point alarms per tank per item being measured, ie; temp, pressure, level. It also has complete Mil Spec Self-Diagnostics.

Cargo Loading Information available on deck as follows:

Tank Ullage
Tank Temperature
Tank or Header Pressure
Tank Rate to Fill or Empty
Total Vessel Time to Fill or Empty
Pump Status per Tank

Options Include:

- FM Approved Beacon on Deck
- FM Approved Horn on Deck
- Full Function Remote Display
- Data Logger
- UPS Battery Packed
- Sea Mode Alarms
- Intrinsically Safe

THE GAUGER

USCG, ABS & FM APPROVED CLOSED TANK GAUGING SYSTEM

ENVIRONMENTAL SPECIFICATIONS

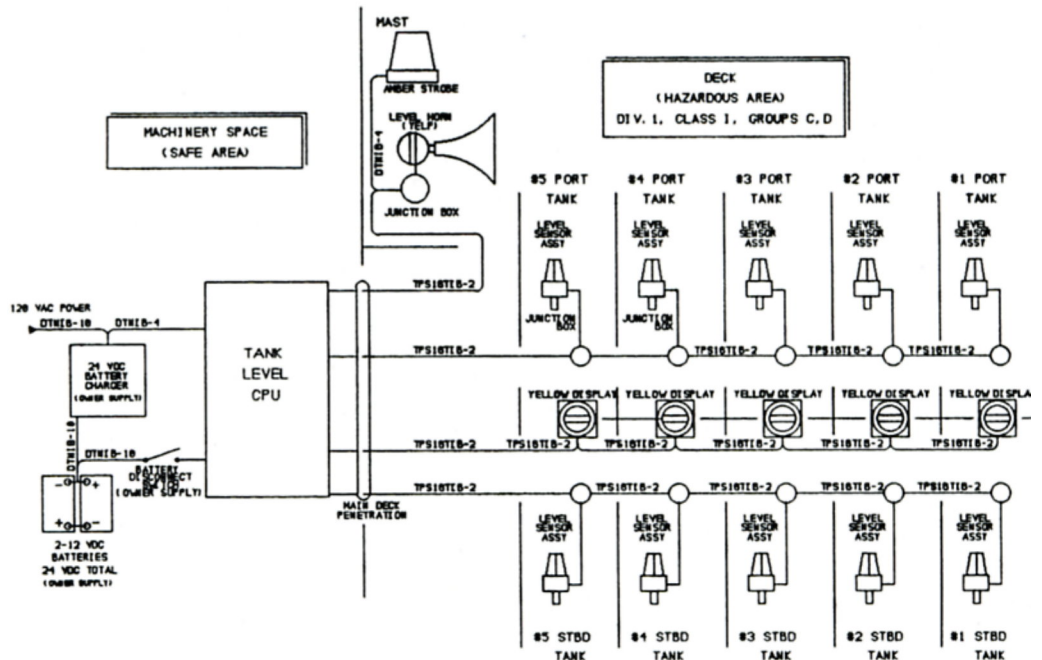
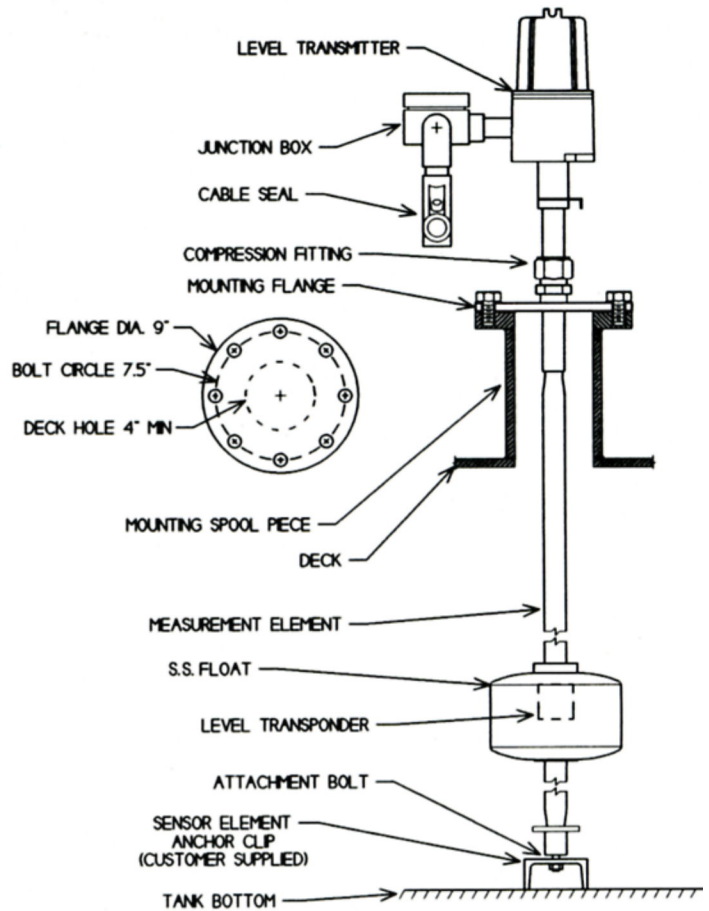
Operating temperature	-30 C to 85 C
Non-operating temperature	-55 C to 95 C
Altitude	-400 to 5000 meters

PHYSICAL CHARACTERISTICS

Size	24" Above Deck Below deck size is determined by depth of tank.
Weight	50 lb.

ELECTRICAL CHARACTERISTICS

Input	12 or 24VDC at 2A
-------	-------------------



EMS

ELECTRONIC MARINE
SYSTEMS, INC.

800 Ferndale Place
Rahway, NJ 07065
908-382-4344
FAX: 908-388-5111